

Industrial Building 3535 W. State Street Milwaukee, WI 53208



BUILDING DESCRIPTION

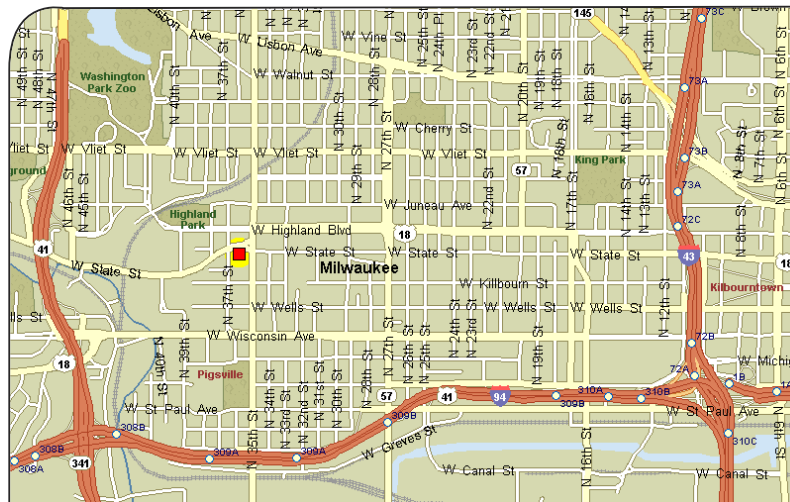
Building Size	25,338 SF
Available Space	25,338 SF
Office Size	3,200 SF
Power	600 AMP Single & Three-Phase
Clear Height	17'
Construction	Masonry Block
Roof	TPO Membrane
Sprinkler	Yes
Column Spacing	(See Attached Floor Plan)
HVAC	Hydraulic Boiler & Gas Fired Unit Heaters
Lighting	Fluorescent
Loading	One (1) Truck Dock Four (4) Drive-in Doors
Sewer/Water	Municipal - City of Milwaukee

SITE DESCRIPTION

Parking	Off-Street Parking (4-8 spots) and small 15-20 car fenced & paved lot
Zoning	LB-2 (Local Business)
Site Size	.60 Acres
Previous/Current Use	Manufacturing/Warehouse

COMMENTS

- Central location within city of Milwaukee, only blocks from I-94 via 35th Street
- Building could be easily sub-divided to accommodate multiple tenants



PROPERTY ECONOMICS

Price	\$299,000
Real Estate Taxes / Year	\$9,362.98 / 2011
2011 Assessed Value	\$348,600.00

For more information
please contact:

Bill Langhoff, CCIM, SIOR

262-901-1319

blanghoff@apexcommercial.com

Travis Tiede

262-901-1323

ttiede@apexcommercial.com

Grubb & Ellis | Apex Commercial

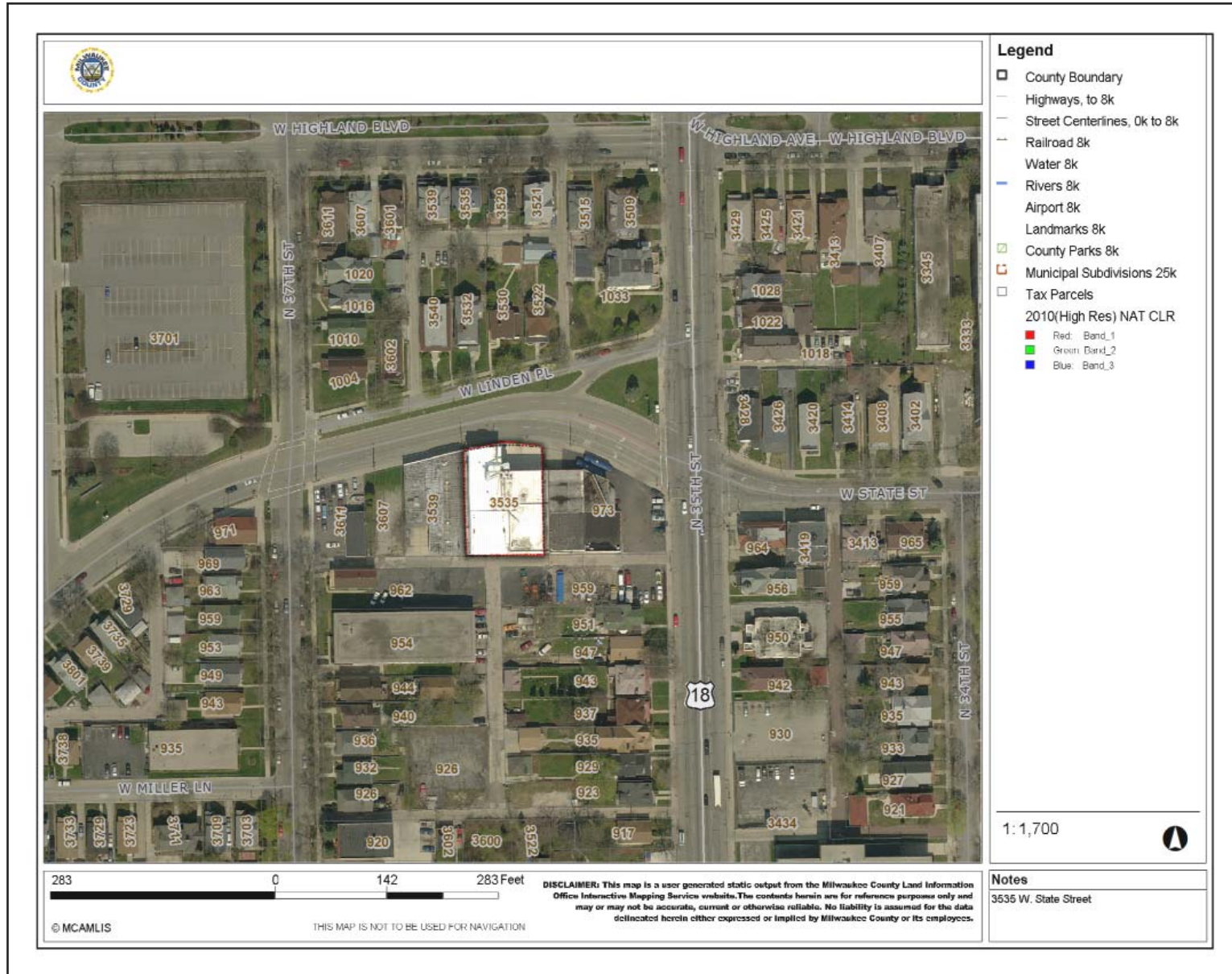
150 N. Sunny Slope Road, Ste. 200

Brookfield, WI 53005

262-784-7500 Phone

262-784-7600 Fax

www.apexcommercial.com



Reproduction in whole or part is permitted only with the written consent of Grubb & Ellis|Apex Commercial, Inc. Some of the data in this report has been gathered from third party sources and has not been independently verified by Grubb & Ellis|Apex Commercial, Inc. Grubb & Ellis|Apex Commercial, Inc. makes no warranties or representations as to the completeness or accuracy thereof.

FROM INSIGHT TO RESULTS

BROKER DISCLOSURE TO NON-RESIDENTIAL CUSTOMERS

- 1 Prior to negotiating on your behalf the Broker must provide you the following disclosure statement:
- 2 **BROKER DISCLOSURE TO CUSTOMERS**
- 3 You are a customer of the broker. The broker is either an agent of another party in the transaction or a subagent of another broker
- 4 who is the agent of another party in the transaction. The broker, or a salesperson acting on behalf of the broker, may provide
- 5 brokerage services to you. Whenever the broker is providing brokerage services to you, the broker owes you, the customer, the
- 6 following duties:
- 7 ■ The duty to provide brokerage services to you fairly and honestly.
- 8 ■ The duty to exercise reasonable skill and care in providing brokerage services to you.
- 9 ■ The duty to provide you with accurate information about market conditions within a reasonable time if you request it, unless
- 10 disclosure of the information is prohibited by law.
- 11 ■ The duty to disclose to you in writing certain material adverse facts about a property, unless disclosure of the information is
- 12 prohibited by law (**See Lines 47-55**).
- 13 ■ The duty to protect your confidentiality. Unless the law requires it, the broker will not disclose your confidential information or the
- 14 confidential information of other parties (**See Lines 22-39**).
- 15 ■ The duty to safeguard trust funds and other property the broker holds.
- 16 ■ The duty, when negotiating, to present contract proposals in an objective and unbiased manner and disclose the advantages and
- 17 disadvantages of the proposals.
- 18 Please review this information carefully. A broker or salesperson can answer your questions about brokerage services, but if you
- 19 need legal advice, tax advice, or a professional home inspection, contact an attorney, tax advisor, or home inspector.
- 20 This disclosure is required by section 452.135 of the Wisconsin statutes and is for information only. It is a plain-language summary of
- 21 a broker's duties to a customer under section 452.133 (1) of the Wisconsin statutes.
- 22 **CONFIDENTIALITY NOTICE TO CUSTOMERS**
- 23 BROKER WILL KEEP CONFIDENTIAL ANY INFORMATION GIVEN TO BROKER IN CONFIDENCE, OR ANY INFORMATION, OR ANY INFORMATION
- 24 OBTAINED BY BROKER THAT HE OR SHE KNOWS A REASONABLE PERSON WOULD WANT TO BE KEPT CONFIDENTIAL,
- 25 UNLESS THE INFORMATION MUST BE DISCLOSED BY LAW OR YOU AUTHORIZE THE BROKER TO DISCLOSE PARTICULAR
- 26 INFORMATION. A BROKER SHALL CONTINUE TO KEEP THE INFORMATION CONFIDENTIAL AFTER BROKER IS NO LONGER
- 27 PROVIDING BROKERAGE SERVICES TO YOU.
- 28 THE FOLLOWING INFORMATION IS REQUIRED TO BE DISCLOSED BY LAW:
- 29 1. MATERIAL ADVERSE FACTS, AS DEFINED IN SECTION 452.01 (5g) OF THE WISCONSIN STATUTES (**SEE LINES 47-55**).
- 30 2. ANY FACTS KNOWN BY THE BROKER THAT CONTRADICT ANY INFORMATION INCLUDED IN A WRITTEN INSPECTION
- 31 REPORT ON THE PROPERTY OR REAL ESTATE THAT IS THE SUBJECT OF THE TRANSACTION.
- 32 TO ENSURE THAT THE BROKER IS AWARE OF WHAT SPECIFIC INFORMATION YOU CONSIDER CONFIDENTIAL, YOU MAY LIST
- 33 THAT INFORMATION BELOW (**SEE LINES 35-36**). AT A LATER TIME, YOU MAY ALSO PROVIDE THE BROKER WITH OTHER
- 34 INFORMATION YOU CONSIDER TO BE CONFIDENTIAL.
- 35 **CONFIDENTIAL INFORMATION:** _____
- 36 _____
- 37 **NON-CONFIDENTIAL INFORMATION** (The following information may be disclosed by Broker): _____
- 38 _____
- 39 (**INSERT INFORMATION YOU AUTHORIZE THE BROKER TO DISCLOSE SUCH AS FINANCIAL QUALIFICATION INFORMATION.**)
- 40 **CONSENT TO TELEPHONE SOLICITATION**
- 41 I/We agree that the Broker and any affiliated settlement service providers (for example, a mortgage company or title company) may
- 42 call our/my home or cell phone numbers regarding issues, goods and services related to the real estate transaction until I/we
- 43 withdraw this consent in writing. **List Home/Cell Numbers:** _____
- 44 **SEX OFFENDER REGISTRY**
- 45 *Notice: You may obtain information about the sex offender registry and persons registered with the registry by contacting the*
- 46 *Wisconsin Department of Corrections on the Internet at: <http://offender.doc.state.wi.us/public/> or by phone at 608-240-5830.*
- 47 **DEFINITION OF MATERIAL ADVERSE FACTS**
- 48 A "material adverse fact" is defined in Wis. Stat. § 452.01(5g) as an adverse fact that a party indicates is of such significance, or that
- 49 is generally recognized by a competent licensee as being of such significance to a reasonable party, that it affects or would affect
- 50 the party's decision to enter into a contract or agreement concerning a transaction or affects or would affect the party's decision
- 51 about the terms of such a contract or agreement. An "adverse fact" is defined in Wis. Stat. § 452.01(1e) as a condition or occurrence
- 52 that a competent licensee generally recognizes will significantly and adversely affect the value of the property, significantly reduce
- 53 the structural integrity of improvements to real estate, or present a significant health risk to occupants of the property; or information
- 54 that indicates that a party to a transaction is not able to or does not intend to meet his or her obligations under a contract or
- 55 agreement made concerning the transaction.

No representation is made as to the legal validity of any provision or the adequacy of any provision in any specific transaction.

Copyright 2007 by Wisconsin REALTORS® Association

Grubb & Ellis/APEX Commercial 150 N. Sunny Slope Rd Ste 200, Brookfield WI 53005-4806

Apex Commercial, Inc.

Phone: 2627847500

Fax: (262) 784-7600

Drafted by Attorney Debra Peterson Conrad

dis.zfx

Produced with ZipForm™ by RE FormsNet, LLC 18025 Fifteen Mile Road, Clinton Township, Michigan 48035 www.zipform.com